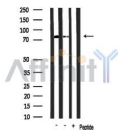


RBAK Ab

[Images\(1\)](#)

Cat.#: AF0422 Size:	Concn.: ~1mg/ml Source: Rabbit	Mol.Wt.: 85kDa Clonality: Polyclonal
Application:	WB 1:500-1:2000, IF/ICC 1:100-1:500 *The optimal dilutions should be determined by the end user.	
Reactivity:	Human,Mouse,Rat	
Storage:	Rabbit IgG in phosphate buffered saline , pH 7.4, 150mM NaCl, 0.02% sodium azide and 50% glycerol. Store at -20 °C. Stable for 12 months from date of receipt.	
Purification:	The antiserum was purified by peptide affinity chromatography using SulfoLink™ Coupling Resin (Thermo Fisher Scientific).	
Immunogen:	A synthesized peptide derived from human RBAK, corresponding to a region within N-terminal amino acids.	
Uniprot:	Q9NYW8	
Description:	RBAK May repress E2F-dependent transcription. May promote AR-dependent transcription. Belongs to the krueppel C2H2-type zinc-finger protein family. Interacts with AR and RB1. May also interact with other nuclear hormone receptors such as NR3C1/GR.	



Western blot analysis of extracts from various samples, using RBAK Ab.
Lane 1: Rat brain lysates;
Lane 2: Mouse lung lysates;
Lane 3: Mouse lung lysates treated with blocking peptide;

IMPORTANT: For western blot, incubate membrane with diluted primary Ab in 5% w/v milk , 1X TBS, 0.1% Tween@20 at 4°C with gentle shaking, overnight.

For Research Use Only. Not for use in diagnostic and therapeutic procedures. Not for resale without express authorization.