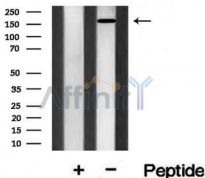


## CD227/MUC1 Ab

[References\(1\)](#) [Images\(2\)](#)

|               |                                                                                                                                                                |                       |
|---------------|----------------------------------------------------------------------------------------------------------------------------------------------------------------|-----------------------|
| Cat.#: AF8524 | Concn.: ~1mg/ml                                                                                                                                                | Mol.Wt.: 170kDa       |
| Size:         | Source: Rabbit                                                                                                                                                 | Clonality: Polyclonal |
| Application:  | WB 1:1000-3000, IHC 1:50-1:200, IF/ICC 1:200-1:500<br>*The optimal dilutions should be determined by the end user.                                             |                       |
| Reactivity:   | Human                                                                                                                                                          |                       |
| Storage:      | Rabbit IgG in phosphate buffered saline , pH 7.4, 150mM NaCl, 0.02% sodium azide and 50% glycerol. Store at -20 °C. Stable for 12 months from date of receipt. |                       |
| Purification: | The antiserum was purified by peptide affinity chromatography using SulfoLink™ Coupling Resin (Thermo Fisher Scientific).                                      |                       |
| Immunogen:    | A synthesized peptide derived from human CD227/MUC1, corresponding to a region within C-terminal amino acids.                                                  |                       |
| Uniprot:      | P15941                                                                                                                                                         |                       |



Western blot analysis of MUC1 using PMA treated 293 whole cell lysates. The lane on the left was treated with blocking peptide.

**IMPORTANT:** For western blot, incubate membrane with diluted primary Ab in 5% w/v milk , 1X TBS, 0.1% Tween@20 at 4°C with gentle shaking, overnight.

For Research Use Only. Not for use in diagnostic and therapeutic procedures. Not for resale without express authorization.