

## Phospho-PTRF (Tyr156) Ab

[Images\(3\)](#)

Cat.#: AF8504                                      Concn.: ~1mg/ml                                      Mol.Wt.: 60 kDa  
 Size:                                                      Source: Rabbit                                              Clonality: Polyclonal

**Application:** IF/ICC 1:100-1:500, WB 1:1000-3000  
 \*The optimal dilutions should be determined by the end user.

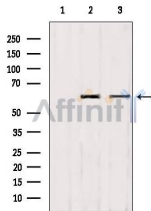
**Reactivity:** Human,Mouse,Rat,Monkey

**Storage:** Rabbit IgG in phosphate buffered saline , pH 7.4, 150mM NaCl, 0.02% sodium azide and 50% glycerol. Store at -20 °C. Stable for 12 months from date of receipt.

**Purification:** The Ab is from purified rabbit serum by affinity purification via sequential chromatography on phospho-peptide and non-phospho-peptide affinity columns.

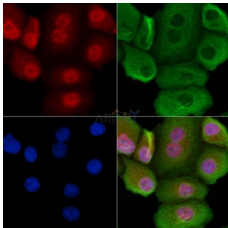
**Immunogen:** A synthesized peptide derived from human PTRF around the phosphorylation site of Tyr156.

**Uniprot:** Q6NZI2



Western blot analysis of extracts from various samples, using PTRF (Phospho-Tyr156) Ab.

Lane 1: Hela treated with blocking peptide.  
 Lane 2: Hela;  
 Lane 3: mouse lung;



AF8504 staining HepG2 cells by IF/ICC. The samples were fixed with PFA and permeabilized in 0.1% Triton X-100, then blocked in 10% serum for 45 minutes at 25°C. Samples were then incubated with primary Ab(#AF8504) and mouse anti-beta tubulin Ab(#T0023) for 1 hour at 37°C. An AlexaFluor594 conjugated goat anti-rabbit IgG Ab(Red) and an AlexaFluor488 conjugated goat anti-mouse IgG Ab(Green) were used as the secondary Ab.

The nuclear counter stain is DAPI (blue).

**IMPORTANT:** For western blot, incubate membrane with diluted primary Ab in 5% w/v milk , 1X TBS, 0.1% Tween@20 at 4°C with gentle shaking, overnight.

For Research Use Only. Not for use in diagnostic and therapeutic procedures. Not for resale without express authorization.