

Phospho-EPHA5 (Tyr650) Ab

[Images\(2\)](#)

Cat.#: AF8426 Concn.: ~1mg/ml Mol.Wt.: 114kDa
Size: Source: Rabbit Clonality: Polyclonal

Application: WB 1:1000-3000
 *The optimal dilutions should be determined by the end user.

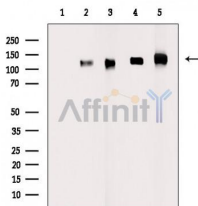
Reactivity: Human,Mouse,Rat

Storage: Rabbit IgG in phosphate buffered saline , pH 7.4, 150mM NaCl, 0.02% sodium azide and 50% glycerol. Store at -20 °C. Stable for 12 months from date of receipt.

Purification: The Ab is from purified rabbit serum by affinity purification via sequential chromatography on phospho-peptide and non-phospho-peptide affinity columns.

Immunogen: A synthesized peptide derived from human EPHA5 around the phosphorylation site of Tyr650.

Uniprot: P54756



Western blot analysis of extracts from various samples, using Phospho-EPHA5 (Tyr650) Ab.
Lane 1: UV treated MCF7 cells, blocked with antigen-specific peptides,
Lane 2: UV treated MCF7 cells,
Lane 3: RAW264.7 cells LPS,
Lane 4: C6 cells LPS,
Lane 5: HepG2 cells lps.

IMPORTANT: For western blot, incubate membrane with diluted primary Ab in 5% w/v milk , 1X TBS, 0.1% Tween@20 at 4°C with gentle shaking, overnight.

For Research Use Only. Not for use in diagnostic and therapeutic procedures. Not for resale without express authorization.