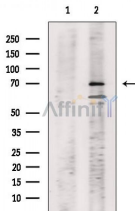


Phospho-SHC (Tyr239+Tyr240) Ab

[Images\(2\)](#)

| | | |
|---------------|--|-----------------------|
| Cat.#: AF8403 | Concn.: ~1mg/ml | Mol.Wt.: 70kDa |
| Size: | Source: Rabbit | Clonality: Polyclonal |
| Application: | WB 1:1000-3000, IF/ICC 1:100-1:500 *The optimal dilutions should be determined by the end user. | |
| Reactivity: | Human,Mouse,Rat,Monkey | |
| Storage: | Rabbit IgG in phosphate buffered saline , pH 7.4, 150mM NaCl, 0.02% sodium azide and 50% glycerol. Store at -20 °C. Stable for 12 months from date of receipt. | |
| Purification: | The Ab is from purified rabbit serum by affinity purification via sequential chromatography on phospho-peptide and non-phospho-peptide affinity columns. | |
| Immunogen: | A synthesized peptide derived from human SHC around the phosphorylation site of Tyr239 and Tyr240. | |
| Uniprot: | P29353 | |



Western blot analysis of extracts from VERO cells(heat shock treatment), using Phospho-SHC (Tyr239+Tyr240)[Tyr349+Tyr350] Ab. The lane on the left was treated with blocking peptide.

IMPORTANT: For western blot, incubate membrane with diluted primary Ab in 5% w/v milk , 1X TBS, 0.1% Tween@20 at 4°C with gentle shaking, overnight.

For Research Use Only. Not for use in diagnostic and therapeutic procedures. Not for resale without express authorization.