

Phospho-PPAR alpha (Ser12) Ab

[References\(2\)](#) [Images\(6\)](#)

Cat.#: AF8392
Size:

Concn.: ~1mg/ml
Source: Rabbit

Mol.Wt.: 52 kDa
Clonality: Polyclonal

Application:

WB 1:1000-3000, IHC 1:50-1:200

*The optimal dilutions should be determined by the end user.

Reactivity:

Human,Mouse,Rat,Monkey

Storage:

Rabbit IgG in phosphate buffered saline , pH 7.4, 150mM NaCl, 0.02% sodium azide and 50% glycerol. Store at -20 °C. Stable for 12 months from date of receipt.

Purification:

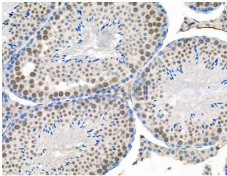
The Ab is from purified rabbit serum by affinity purification via sequential chromatography on phospho-peptide and non-phospho-peptide affinity columns.

Immunogen:

A synthesized peptide derived from human PPAR alpha around the phosphorylation site of Ser12.

Uniprot:

Q07869



AF8392 at 1/100 staining Mouse testis tissue by IHC-P. The sample was formaldehyde fixed and a heat mediated antigen retrieval step in citrate buffer was performed. The sample was then blocked and incubated with the primary Ab at 4°C overnight. An HRP conjugated anti-Rabbit Ab was used as the secondary Ab.

IMPORTANT: For western blot, incubate membrane with diluted primary Ab in 5% w/v milk , 1X TBS, 0.1% Tween@20 at 4°C with gentle shaking, overnight.

For Research Use Only. Not for use in diagnostic and therapeutic procedures. Not for resale without express authorization.