

Phospho-beta Catenin (Ser552) Ab

[References\(1\)](#) [Images\(3\)](#)

Cat.#: AF8340 Concn.: ~1mg/ml Mol.Wt.: 92kDa
Size: Source: Rabbit Clonality: Polyclonal

Application: WB 1:1000-3000, IF/ICC 1:100-1:500
*The optimal dilutions should be determined by the end user.

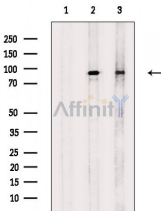
Reactivity: Human,Mouse,Rat

Storage: Rabbit IgG in phosphate buffered saline , pH 7.4, 150mM NaCl, 0.02% sodium azide and 50% glycerol. Store at -20 °C. Stable for 12 months from date of receipt.

Purification: The Ab is from purified rabbit serum by affinity purification via sequential chromatography on phospho-peptide and non-phospho-peptide affinity columns.

Immunogen: A synthesized peptide derived from human Catenin-? around the phosphorylation site of Ser552.

Uniprot: P35222



Western blot analysis of extracts from various samples, using Phospho-beta Catenin (Ser552) Ab.
Lane 1: 3T3-L1P6(heat shock treatment), blocked with antigen-specific peptides,
Lane 2: 3T3-L1P6(heat shock treatment),
Lane 3: HepG2 cells(H2O2 treatment).

IMPORTANT: For western blot, incubate membrane with diluted primary Ab in 5% w/v milk , 1X TBS, 0.1% Tween@20 at 4°C with gentle shaking, overnight.

For Research Use Only. Not for use in diagnostic and therapeutic procedures. Not for resale without express authorization.