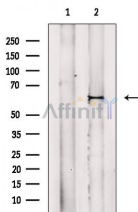


Phospho-MAP2 (Thr1616) Ab

[Images\(3\)](#)

Cat.#: AF8280	Concn.: ~1mg/ml	Mol.Wt.: 55-75(2c/2d),280(2a/2b)kd,62kDa
Size:	Source: Rabbit	Clonality: Polyclonal
Application:	WB 1:1000-3000 *The optimal dilutions should be determined by the end user.	
Reactivity:	Human,Mouse,Rat,Monkey	
Storage:	Rabbit IgG in phosphate buffered saline , pH 7.4, 150mM NaCl, 0.02% sodium azide and 50% glycerol. Store at -20 °C. Stable for 12 months from date of receipt.	
Purification:	The Ab is from purified rabbit serum by affinity purification via sequential chromatography on phospho-peptide and non-phospho-peptide affinity columns.	
Immunogen:	A synthesized peptide derived from human MAP2 around the phosphorylation site of Thr1616.	
Uniprot:	P11137	



Western blot analysis of extracts from Rat brain, using Phospho-MAP2 (Thr1616) Ab. The lane on the left was treated with blocking peptide.

Observed bands: 62kDa

IMPORTANT: For western blot, incubate membrane with diluted primary Ab in 5% w/v milk , 1X TBS, 0.1% Tween@20 at 4°C with gentle shaking, overnight.

For Research Use Only. Not for use in diagnostic and therapeutic procedures. Not for resale without express authorization.