

## YTHDF1 Ab

[Images\(2\)](#)

Cat.#: AF0462                                      Concn.: ~1mg/ml                                      Mol.Wt.: 61kDa  
Size:    Source: Rabbit    Clonality: Polyclonal

Application:                                      WB 1:500-1:2000, IF/ICC 1:100-1:500  
\*The optimal dilutions should be determined by the end user.

Reactivity:                                      Human,Mouse,Rat

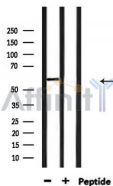
Storage:    Rabbit IgG in phosphate buffered saline , pH 7.4, 150mM NaCl, 0.02% sodium azide and 50% glycerol. Store at -20 °C. Stable for 12 months from date of receipt.

Purification:                                      The antiserum was purified by peptide affinity chromatography using SulfoLink™ Coupling Resin (Thermo Fisher Scientific).

Immunogen:                                      A synthesized peptide derived from human YTHDF1, corresponding to a region within N-terminal amino acids.

Uniprot:    Q9BYJ9

Description:                                      YTHDF1 2 isoforms of the human protein are produced by alternative splicing.



Western blot analysis of extracts from 293, using YTHDF1 Ab.

**IMPORTANT:** For western blot, incubate membrane with diluted primary Ab in 5% w/v milk , 1X TBS, 0.1% Tween@20 at 4°C with gentle shaking, overnight.

For Research Use Only. Not for use in diagnostic and therapeutic procedures. Not for resale without express authorization.