

Phospho-eIF2B epsilon (Ser525) Ab

[Images\(4\)](#)

Cat.#: AF8211 Concn.: ~1mg/ml Mol.Wt.: 80KD
Size: Source: Rabbit Clonality: Polyclonal

Application: WB 1:1000-3000, IHC 1:50-1:200
*The optimal dilutions should be determined by the end user.

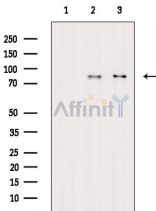
Reactivity: Human,Mouse,Rat

Storage: Rabbit IgG in phosphate buffered saline , pH 7.4, 150mM NaCl, 0.02% sodium azide and 50% glycerol. Store at -20 °C. Stable for 12 months from date of receipt.

Purification: The Ab is from purified rabbit serum by affinity purification via sequential chromatography on phospho-peptide and non-phospho-peptide affinity columns.

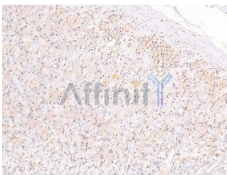
Immunogen: A synthesized peptide derived from human eIF2B-? around the phosphorylation site of Ser525.

Uniprot: Q13144



Western blot analysis of extracts from various samples, using Phospho-eIF2B epsilon (Ser525) Ab.

Lane 1: Rat heart, blocked with antigen-specific peptides,
Lane 2: Rat heart,
Lane 3: K562 cells.



AF8211 at 1/200 staining Rat ganstric tissue sections by IHC-P. The tissue was formaldehyde fixed and a heat mediated antigen retrieval step in citrate buffer was performed. The tissue was then blocked and incubated with the Ab for 1.5 hours at 22°C. An HRP conjugated goat anti-rabbit Ab was used as the secondary Ab.

IMPORTANT: For western blot, incubate membrane with diluted primary Ab in 5% w/v milk , 1X TBS, 0.1% Tween@20 at 4°C with gentle shaking, overnight.

For Research Use Only. Not for use in diagnostic and therapeutic procedures. Not for resale without express authorization.