

## Phospho-TBK1 (Ser172) Ab

[References\(5\)](#) [Images\(19\)](#)

Cat.#: AF8190                      Concn.: ~1mg/ml                      Mol.Wt.: 84kDa  
Size:                                      Source: Rabbit                      Clonality: Polyclonal

Application:                      WB 1:1000-3000, IHC 1:50-1:200  
\*The optimal dilutions should be determined by the end user.

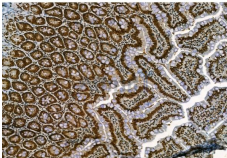
Reactivity:                      Human,Mouse,Rat

Storage:                              Rabbit IgG in phosphate buffered saline , pH 7.4, 150mM NaCl, 0.02% sodium azide and 50% glycerol. Store at -20 °C. Stable for 12 months from date of receipt.

Purification:                      The Ab is from purified rabbit serum by affinity purification via sequential chromatography on phospho-peptide and non-phospho-peptide affinity columns.

Immunogen:                      A synthesized peptide derived from human TBK1 around the phosphorylation site of Ser172.

Uniprot:                              Q9UHD2



AF8190 at 1/100 staining Rat colon tissue by IHC-P. The sample was formaldehyde fixed and a heat mediated antigen retrieval step in citrate buffer was performed. The sample was then blocked and incubated with the primary Ab at 4°C overnight. An HRP conjugated anti-Rabbit Ab was used as the secondary Ab.

**IMPORTANT:** For western blot, incubate membrane with diluted primary Ab in 5% w/v milk , 1X TBS, 0.1% Tween@20 at 4°C with gentle shaking, overnight.

For Research Use Only. Not for use in diagnostic and therapeutic procedures. Not for resale without express authorization.