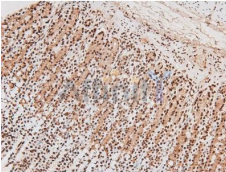


## Phospho-JAK2/3 (Tyr966/Tyr939) Ab

[References\(1\)](#) [Images\(4\)](#)

|               |  |                       |
|---------------|--|-----------------------|
| Cat.#: AF8158 | Concn.: ~1mg/ml  | Mol.Wt.: 130KD        |
| Size:         | Source: Rabbit   | Clonality: Polyclonal |
| Application:  | WB 1:1000-3000, IHC 1:50-1:200<br>*The optimal dilutions should be determined by the end user.   |                       |
| Reactivity:   | Human,Mouse,Rat  |                       |
| Storage:      | Rabbit IgG in phosphate buffered saline , pH 7.4, 150mM NaCl, 0.02% sodium azide and 50% glycerol. Store at -20 °C. Stable for 12 months from date of receipt. |                       |
| Purification: | The Ab is from purified rabbit serum by affinity purification via sequential chromatography on phospho-peptide and non-phospho-peptide affinity columns.       |                       |
| Immunogen:    | A synthesized peptide derived from human JAK2/3 around the phosphorylation site of Tyr966/939.   |                       |
| Uniprot:      | O60674/P52333  |                       |



AF8158 at 1/200 staining Rat ganstric tissue sections by IHC-P. The tissue was formaldehyde fixed and a heat mediated antigen retrieval step in citrate buffer was performed. The tissue was then blocked and incubated with the Ab for 1.5 hours at 22°C. An HRP conjugated goat anti-rabbit Ab was used as the secondary Ab.

**IMPORTANT:** For western blot, incubate membrane with diluted primary Ab in 5% w/v milk , 1X TBS, 0.1% Tween@20 at 4°C with gentle shaking, overnight.

For Research Use Only. Not for use in diagnostic and therapeutic procedures. Not for resale without express authorization.