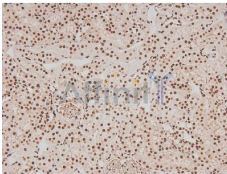


Phospho-FER (Tyr714) Ab

[Images\(4\)](#)

| | | |
|---------------|--|-----------------------|
| Cat.#: AF8147 | Concn.: ~1mg/ml | Mol.Wt.: 85kDa |
| Size: | Source: Rabbit | Clonality: Polyclonal |
| Application: | WB 1:1000-3000, IHC 1:50-1:200, IF/ICC 1:100-1:500 *The optimal dilutions should be determined by the end user. | |
| Reactivity: | Human,Mouse,Rat | |
| Storage: | Rabbit IgG in phosphate buffered saline , pH 7.4, 150mM NaCl, 0.02% sodium azide and 50% glycerol. Store at -20 °C. Stable for 12 months from date of receipt. | |
| Purification: | The Ab is from purified rabbit serum by affinity purification via sequential chromatography on phospho-peptide and non-phospho-peptide affinity columns. | |
| Immunogen: | A synthesized peptide derived from human FER around the phosphorylation site of Tyr714. | |
| Uniprot: | P16591 | |



AF8147 at 1/200 staining Rat kidney tissue sections by IHC-P. The tissue was formaldehyde fixed and a heat mediated antigen retrieval step in citrate buffer was performed. The tissue was then blocked and incubated with the Ab for 1.5 hours at 22°C. An HRP conjugated goat anti-rabbit Ab was used as the secondary Ab.

IMPORTANT: For western blot, incubate membrane with diluted primary Ab in 5% w/v milk , 1X TBS, 0.1% Tween@20 at 4°C with gentle shaking, overnight.

For Research Use Only. Not for use in diagnostic and therapeutic procedures. Not for resale without express authorization.