

## Phospho-Tau (Ser717/Ser400) Ab

[Images\(2\)](#)

Cat.#: AF8129                      Concn.: ~1mg/ml                      Mol.Wt.: 50-80kDa  
Size:                                      Source: Rabbit                              Clonality: Polyclonal

Application:                      WB 1:1000-3000  
    \*The optimal dilutions should be determined by the end user.

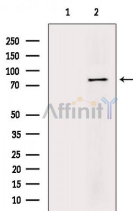
Reactivity:                      Human,Mouse,Rat

Storage:                              Rabbit IgG in phosphate buffered saline , pH 7.4, 150mM NaCl, 0.02% sodium azide and 50% glycerol. Store at -20 °C. Stable for 12 months from date of receipt.

Purification:                      The Ab is from purified rabbit serum by affinity purification via sequential chromatography on phospho-peptide and non-phospho-peptide affinity columns.

Immunogen:                      A synthesized peptide derived from human Tau around the phosphorylation site of Ser717/400.

Uniprot:                              P10636



Western blot analysis of extracts from HepG2 cells(H<sub>2</sub>O<sub>2</sub> treatment), using Phospho-Tau (Ser717/Ser400) Ab. The lane on the left was treated with blocking peptide.

**IMPORTANT:** For western blot, incubate membrane with diluted primary Ab in 5% w/v milk , 1X TBS, 0.1% Tween@20 at 4°C with gentle shaking, overnight.

For Research Use Only. Not for use in diagnostic and therapeutic procedures. Not for resale without express authorization.