

## Phospho-beta Catenin (Tyr142) Ab

[Images\(2\)](#)

Cat.#: AF8101                      Concn.: ~1mg/ml                      Mol.Wt.: 92kDa  
Size:                                      Source: Rabbit                          Clonality: Polyclonal

Application:                          WB 1:1000-3000, IF/ICC 1:100-1:500  
\*The optimal dilutions should be determined by the end user.

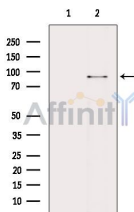
Reactivity:                            Human,Mouse,Rat,Monkey

Storage:                                Rabbit IgG in phosphate buffered saline , pH 7.4, 150mM NaCl, 0.02% sodium azide and 50% glycerol. Store at -20 °C. Stable for 12 months from date of receipt.

Purification:                         The Ab is from purified rabbit serum by affinity purification via sequential chromatography on phospho-peptide and non-phospho-peptide affinity columns.

Immunogen:                          A synthesized peptide derived from human Catenin-? around the phosphorylation site of Tyr142.

Uniprot:                                 P35222



Western blot analysis of extracts from VERO cells(serum starvation treatment), using Phospho-beta Catenin (Tyr142) Ab. The lane on the left was treated with blocking peptide.

**IMPORTANT:** For western blot, incubate membrane with diluted primary Ab in 5% w/v milk , 1X TBS, 0.1% Tween@20 at 4°C with gentle shaking, overnight.

For Research Use Only. Not for use in diagnostic and therapeutic procedures. Not for resale without express authorization.