

## Phospho-Centaurin beta-1 (Ser554) Ab

[Images\(2\)](#)

Cat.#: AF8083                      Concn.: ~1mg/ml                      Mol.Wt.: 81KD  
Size:                                      Source: Rabbit                              Clonality: Polyclonal

Application:                      WB 1:1000-3000  
    \*The optimal dilutions should be determined by the end user.

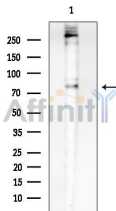
Reactivity:                      Human,Mouse

Storage:                              Rabbit IgG in phosphate buffered saline , pH 7.4, 150mM NaCl, 0.02% sodium azide and 50% glycerol. Store at -20 °C. Stable for 12 months from date of receipt.

Purification:                      The Ab is from purified rabbit serum by affinity purification via sequential chromatography on phospho-peptide and non-phospho-peptide affinity columns.

Immunogen:                      A synthesized peptide derived from human Centaurin-?1 around the phosphorylation site of Ser554.

Uniprot:                              Q15027



Western blot analysis of extracts from COLO205 cells(heat-shock treatment), using Phospho-Centaurin beta-1 (Ser554) Ab at 1/1000 dilution. Observed bands:80kD.

**IMPORTANT:** For western blot, incubate membrane with diluted primary Ab in 5% w/v milk , 1X TBS, 0.1% Tween@20 at 4°C with gentle shaking, overnight.

For Research Use Only. Not for use in diagnostic and therapeutic procedures. Not for resale without express authorization.