

## Phospho-Ret (Tyr905) Ab

[References\(1\)](#) [Images\(3\)](#)

Cat.#: AF8055                      Concn.: ~1mg/ml                      Mol.Wt.: 175kDa  
Size:                                      Source: Rabbit                          Clonality: Polyclonal

Application:                      WB 1:1000-3000, IF/ICC 1:100-1:500  
\*The optimal dilutions should be determined by the end user.

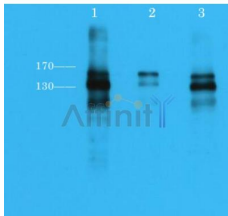
Reactivity:                        Human,Mouse,Rat,Monkey

Storage:                            Rabbit IgG in phosphate buffered saline , pH 7.4, 150mM NaCl, 0.02% sodium azide and 50% glycerol. Store at -20 °C. Stable for 12 months from date of receipt.

Purification:                      The Ab is from purified rabbit serum by affinity purification via sequential chromatography on phospho-peptide and non-phospho-peptide affinity columns.

Immunogen:                        A synthesized peptide derived from human Ret around the phosphorylation site of Tyr905.

Uniprot:                              P07949



Western blot analysis of extracts from ret transfected 293 cells lysates, using Ret (Phospho-Tyr905) Ab.

Lane1: Phosphotyrosine mAb at 1:2000;  
Lane2: Ret (Phospho-Tyr905) Ab(AF8055) at 1:2000;  
Lane3: Phospho-Ret (Tyr1062) Ab(AF3120) at 1:2000.

**IMPORTANT:** For western blot, incubate membrane with diluted primary Ab in 5% w/v milk , 1X TBS, 0.1% Tween@20 at 4°C with gentle shaking, overnight.

For Research Use Only. Not for use in diagnostic and therapeutic procedures. Not for resale without express authorization.