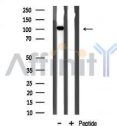


## KSR2 Ab

[Images\(1\)](#)

Cat.#: AF0688	Concn.: ~1mg/ml	Mol.Wt.: 108kDa
Size:	Source: Rabbit	Clonality: Polyclonal

Application:	WB 1:500-1:2000, IF/ICC 1:100-1:500 *The optimal dilutions should be determined by the end user.
Reactivity:	Human,Mouse
Storage:	Rabbit IgG in phosphate buffered saline , pH 7.4, 150mM NaCl, 0.02% sodium azide and 50% glycerol. Store at -20 °C. Stable for 12 months from date of receipt.
Purification:	The antiserum was purified by peptide affinity chromatography using SulfoLink™ Coupling Resin (Thermo Fisher Scientific).
Immunogen:	A synthesized peptide derived from human KSR2, corresponding to a region within the internal amino acids.
Uniprot:	Q6VAB6
Description:	KSR2 Location-regulated scaffold connecting MEK to RAF. Blocks MAP3K8 kinase activity and MAP3K8-mediated signaling. Acts as a negative regulator of MAP3K3-mediated activation of ERK, JNK and NF-kappa-B pathways, inhibiting MAP3K3-mediated interleukin-8 production. Belongs to the protein kinase superfamily. TKL Ser/Thr protein kinase family. Interacts with MAP2K1, MAP3K8, MAPK, RAS and RAF. 2 isoforms of the human protein are produced by alternative splicing.



Western blot analysis of KSR2 expression in Mouse brain lysate

**IMPORTANT:** For western blot, incubate membrane with diluted primary Ab in 5% w/v milk , 1X TBS, 0.1% Tween@20 at 4°C with gentle shaking, overnight.

For Research Use Only. Not for use in diagnostic and therapeutic procedures. Not for resale without express authorization.