

## SFXN4 Ab

[Images\(1\)](#)

Cat.#: AF0580                      Concn.: ~1mg/ml                      Mol.Wt.: 37kDa  
Size:                                      Source: Rabbit                              Clonality: Polyclonal

Application:                      WB 1:500-1:2000, IF/ICC 1:100-1:500  
\*The optimal dilutions should be determined by the end user.

Reactivity:                      Human

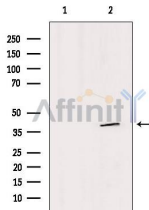
Storage:                              Rabbit IgG in phosphate buffered saline , pH 7.4, 150mM NaCl, 0.02% sodium azide and 50% glycerol. Store at -20 °C. Stable for 12 months from date of receipt.

Purification:                      The antiserum was purified by peptide affinity chromatography using SulfoLink™ Coupling Resin (Thermo Fisher Scientific).

Immunogen:                      A synthesized peptide derived from human SFXN4, corresponding to a region within N-terminal amino acids.

Uniprot:                              Q6P4A7

Description:                      Sfxn4 Potential iron transporter. Belongs to the sideroflexin family. 3 isoforms of the human protein are produced by alternative splicing. Note: This description may include information from UniProtKB.



Western blot analysis of extracts from HepG2, using SFXN4 Ab. Lane 1 was treated with the antigen-specific peptide.

**IMPORTANT:** For western blot, incubate membrane with diluted primary Ab in 5% w/v milk , 1X TBS, 0.1% Tween@20 at 4°C with gentle shaking, overnight.

For Research Use Only. Not for use in diagnostic and therapeutic procedures. Not for resale without express authorization.