

## Phospho-RAD9 (Ser272) Ab

[Images\(2\)](#)

Cat.#: AF8019                                  Concn.: ~1mg/ml                                  Mol.Wt.: 43kDa  
Size:    Source: Rabbit    Clonality: Polyclonal

Application:    WB 1:1000-3000  
\*The optimal dilutions should be determined by the end user.

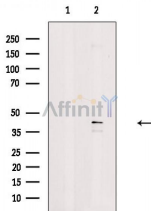
Reactivity:    Human

Storage:    Rabbit IgG in phosphate buffered saline , pH 7.4, 150mM NaCl, 0.02% sodium azide and 50% glycerol. Store at -20 °C. Stable for 12 months from date of receipt.

Purification:    The Ab is from purified rabbit serum by affinity purification via sequential chromatography on phospho-peptide and non-phospho-peptide affinity columns.

Immunogen:    A synthesized peptide derived from human RAD9 around the phosphorylation site of Ser272.

Uniprot:    Q99638



Western blot analysis of extracts from Raji cells (serum starvation treatment), using Phospho-RAD9 (Ser272) Ab. The lane on the left was treated with blocking peptide.

**IMPORTANT:** For western blot, incubate membrane with diluted primary Ab in 5% w/v milk , 1X TBS, 0.1% Tween@20 at 4°C with gentle shaking, overnight.

For Research Use Only. Not for use in diagnostic and therapeutic procedures. Not for resale without express authorization.