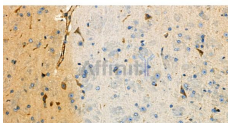


mGluR4 Ab

[References\(1\)](#) [Images\(4\)](#)

Cat.#: AF0168	Concn.: ~1mg/ml	Mol.Wt.: 100kDa
Size:	Source: Rabbit	Clonality: Polyclonal
Application:	WB 1:500-1:3000, IHC 1:50-1:200, IF/ICC 1:100-1:500 *The optimal dilutions should be determined by the end user.	
Reactivity:	Human,Mouse,Rat	
Storage:	Rabbit IgG in phosphate buffered saline , pH 7.4, 150mM NaCl, 0.02% sodium azide and 50% glycerol. Store at -20 °C. Stable for 12 months from date of receipt.	
Purification:	The antiserum was purified by peptide affinity chromatography using SulfoLink™ Coupling Resin (Thermo Fisher Scientific).	
Immunogen:	A synthesized peptide derived from human mGluR4, corresponding to a region within C-terminal amino acids.	
Uniprot:	Q14833	
Description:	mGluR4 metabotropic glutamate receptor 3, a G-protein coupled receptor for glutamate. L-glutamate is the major excitatory neurotransmitter in the central nervous system and activates both ionotropic and metabotropic glutamate receptors. The activity of this receptor is mediated by a G-protein that inhibits adenylate cyclase activity.	



AF0168 at 1/100 staining Mouse brain tissue by IHC-P. The sample was formaldehyde fixed and a heat mediated antigen retrieval step in citrate buffer was performed. The sample was then blocked and incubated with the primary Ab at 4°C overnight. An HRP conjugated anti-Rabbit Ab was used as the secondary Ab.

IMPORTANT: For western blot, incubate membrane with diluted primary Ab in 5% w/v milk , 1X TBS, 0.1% Tween@20 at 4°C with gentle shaking, overnight.

For Research Use Only. Not for use in diagnostic and therapeutic procedures. Not for resale without express authorization.