

Goat Anti-Mouse IgG (H+L) FITC -conjugated

Cat.#: S0007
Size: 50ul,100ul,200ul

Concn.: 1mg/ml
Source: Goat

Mol.Wt.:
Clonality: Polyclonal

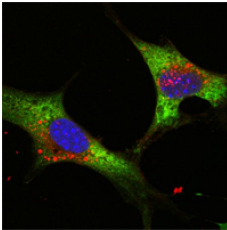
Application: WB 1:100 – 1:500, IF/ICC 1:100 – 1:500
*The optimal dilutions should be determined by the end user.

Reactivity: Mouse

Purification: affinity purification.

Immunogen: The antiserum was developed in goat using the MOUSE IgG as the immunogen.

Storage Condition and Buffer: 0.01M Sodium phosphate, 0.25M NaCl, 50% glycerol, pH7.6.
Store at -20°C□avoid repeated thawing and freezing.



Confocal immunofluorescence analysis of NTERA-2 cells using LIN28 mouse mAb (green).
Blue: DRAQ5 fluorescent DNA dye.
Green: Goat Anti-Mouse IgG(H+L) FITC -conjugated

IMPORTANT: For western blot, incubate membrane with diluted secondary Ab in 5% w/v milk, 1X TBS, 0.1% Tween@20 at 37°C, 2H.

For Research Use Only. Not for use in diagnostic and therapeutic procedures. Not for resale without express authorization.