

Tubulin alpha Antibody

Cat.#: AF7010 Concn.: 1mg/ml Mol.Wt.: 50kDa
Size: 1ml,200ul,100ul,50ul Source: Rabbit Clonality: Polyclonal

Application: WB 1:5000-1:20000, IHC 1:50-1:200, IF/ICC 1:100-1:500, ELISA(peptide) 1:20000-1:40000
*The optimal dilutions should be determined by the end user.

Reactivity: Human,Mouse,Rat,Pig,Bovine,Rabbit,Chicken,Plants,Fish

Purification: The antiserum was purified by peptide affinity chromatography using SulfoLink™ Coupling Resin (Thermo Fisher Scientific).

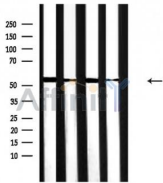
Specificity: Tubulin alpha Antibody detects endogenous levels of total Tubulin alpha.

Immunogen: A synthesized peptide derived from human Tubulin alpha.

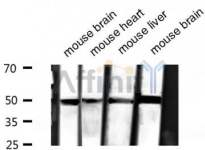
Uniprot: P68363/Q71U36

Description: TUBA1B Tubulin is the major constituent of microtubules. It binds two moles of GTP, one at an exchangeable site on the beta chain and one at a non-exchangeable site on the alpha-chain. Dimer of alpha and beta chains. Belongs to the tubulin family

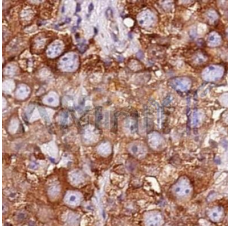
Storage Condition and Buffer: Rabbit IgG in phosphate buffered saline , pH 7.4, 150mM NaCl, 0.02% sodium azide and 50% glycerol.Store at -20 °C.Stable for 12 months from date of receipt.



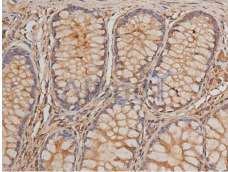
Western blot analysis of Tubulin alpha expression in various sample.
Lane1:rat brain,
Lane2:rat spleen,
Lane3:mouse brain,
Lane4:mouse spleen



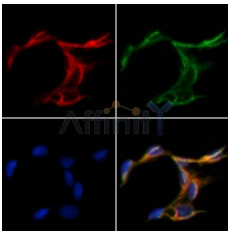
Western blot analysis of Tubulin alpha expression in various sample.
Lane1:mouse brain,
Lane2:mouse heart,
Lane3:mouse liver,
Lane4:mouse brain



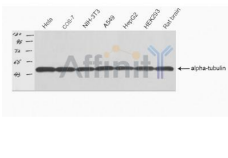
AF7010 at 1/100 staining human breast tissue by IHC-P. The sample was formaldehyde fixed and a heat mediated antigen retrieval step in citrate buffer was performed. The sample was then blocked and incubated with the antibody for 1.5 hours at 22°C. An HRP conjugated goat anti-rabbit antibody was used as the secondary antibody.



AF7010 at 1/200 staining human colon tissue sections by IHC-P. The tissue was formaldehyde fixed and a heat mediated antigen retrieval step in citrate buffer was performed. The tissue was then blocked and incubated with the antibody for 1.5 hours at 22°C. An HRP conjugated goat anti-rabbit antibody was used as the secondary antibody.



AF7010 staining Hela cells by IF/ICC. The samples were fixed with PFA and permeabilized in 0.1% Triton X-100, then blocked in 10% serum for 45 minutes at 25°C. Samples were then incubated with primary Ab(AF7010 1:200) and mouse anti-beta tubulin Ab(T0023 1:200) for 1 hour at 37°C. An AlexaFluor594 conjugated goat anti-rabbit IgG(H+L) Ab(Red) and an AlexaFluor488 conjugated goat anti-mouse IgG(H+L) Ab(Green) were used as the secondary antibody.



Western blot analysis of Tubulin alpha expression in various sample.

Lane1:Hela,
 Lane2: COS-7,
 lane3:NIH-3T3,
 lane4:A549,
 lane5:HepG2,
 lane6:HEK293,

IMPORTANT: For western blot, incubate membrane with diluted primary Ab in 5% w/v milk, 1X TBS, 0.1% Tween@20 at 4°C with gentle shaking, overnight.

For Research Use Only. Not for use in diagnostic and therapeutic procedures. Not for resale without express authorization.